







Trabzon 30280

Pegasus

Status	End of Line	Composition	40% PC, 53% PL, 7% VI	Martindale	50,000 Martindale Cycles
Brand	<u>Pegasus</u>	Width	140cm / 55.1"	Wyzenbeek	100,000 Wyzenbeek Double Rubs
Collection	Merchants	Weight	563.0g/m / 514g/yd	Colourfastness	UV 6/8 Blue Scale
Country of Origin	TURKEY	Horizontal Repeat	1.5cm / 0.6"	Fire Retardancy	NFPA 260 - Class 1
Finishes	—	Vertical Repeat	2cm / 0.8"	Environmental	—

Care Instructions

 Do not bleach	 Do not tumble dry	 Drip dry in shade
 Drycleaning Gentle cycle	 Low iron max 110C	 Machine wash cool gentle cycle

Usage

 Upholstery Heavy Duty	 Accessory
---	---

Attributes

 Fire Retardant
--

Notes

Commercial High Performance

Colours



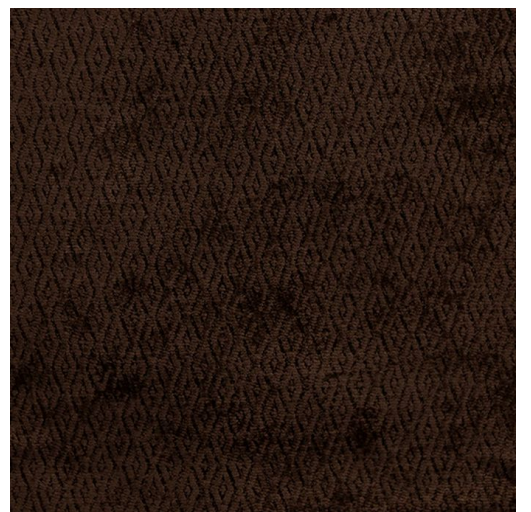
Caviar



Driftwood



Moonbeam



Peat

James Dunlop