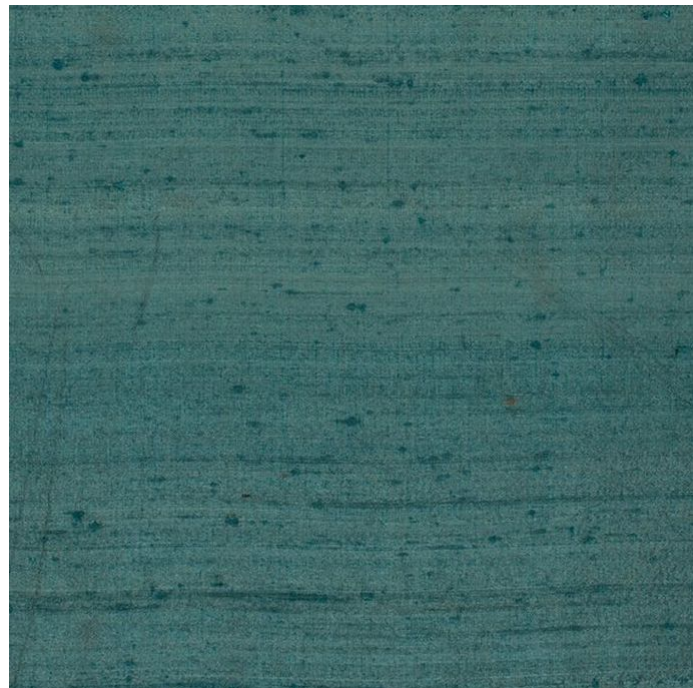


JAMES DUNLOP TEXTILES

Luxury 19018-208

James Dunlop



Colour	Porcelain-208	Composition	100% SE	Martindale	-
Status	Indent	Width	137cm / 53.9"	Wyzenbeek	-
Brand	James Dunlop	Weight	121.7g/m / 111g/yd	Colourfastness	-
Collection	-	Horizontal Repeat	None / None	Fire Retardancy	CAL 117
Country of Origin	India	Vertical Repeat	None / None	Environmental	-
Finishes	-				

Care Instructions

- Do not bleach
- Do not tumble dry
- Do not wash
- Drycleaning Gentle cycle
- Med Iron max 150C

Usage

- Curtains

Attributes

- Fire Retardant

Luxury is also available in Acajou-187, Arabesque-183, Artisan-177, Autumn-025, Avocado-226, Azalea-195, Beaver-171, Beige-009, Berry-191, Biscuit-002, Bordeaux, Brownie-170, Butternut-035, Butterscotch-28, Calico-014, Cameo-037, Canal-214, Caramel-022, Cashew-172, Celadon-134, Celery-125, Champagne-016, Charcoal-163, Chestnut-029, Chocolate-030, Chrome-138, Cinnamon-175, Clay-178, Cocoon-153, Confetti-076, Cream-154, Crimson, Crystal-158, Damson-200, Denim-206, Desert-008, Doe-173, Dove-165, Duckegg-210, Dust-024, Ecu-227, Evergreen-222, Flint-199, Fog-151, Foliage-223, Fossil-152, Fox-185, Frost-135, Gentian-202, Ginger-023, Grenadine-194, Gull-162, Haze-103, Honey-033, Ice-011, Iguana-225, Ink-203, Ivory-010, Ivy-218, Jute-017, Kiwi-224, Lac-209, Lichen-217, Lily-215, Limeade-219, Linen-130, Loden-221, Lollypop-193, Madder-188, Mahogany-186, Maple-159, Marble-150, Marzipan-005, Mauve-086, Mauve-086, Mineral-211, Moss-126, Mushroom-020, Mustard-174, Nectar-179, Onyx-140, Orange-181, Oyster-157, Palm-220, Paprika-182, Peacock-213, Pearl, Petrol-204, Pewter-139, Plaza-160, Poppy-190, Pristine-156, Provincial-205, Pumpkin-180, Purple-111, Putty-019, Quail-198, Raffia-015, Raisin-201, Rattan-007, Sahara-006, Sand-001, Sangria-192, Sauterne-176, Seagrass-003, Sesame-018, Shale-164, Shrimp-196, Sienna-042, Silver-136, Snow-012, Spice-034, Sterling-161, Sunset-184, Surf-212, Tan-027, Tapestry-207, Taupe-021, Tobacco-168, Tomato-189, Tulip-197, Walnut-169, Whisper-216, Wool-155, Zephyr-167, Zinc-166.