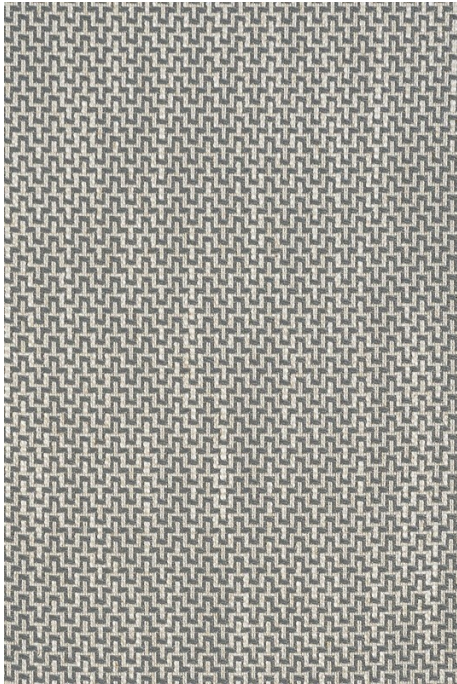




Effect 12957-104





| | | | | | |
|--------------------------|--------------|--------------------------|----------------------------------|------------------------|--------------------------|
| Colour | Mineral | Composition | 37% PP, 31% VI, 27% CO, 5% LI | Finishes | – |
| Status | Active | Width | 138cm / 54.3" | Abrasion | 40,000 Martindale Cycles |
| Brand | James Dunlop | Weight | 712.1g/m / 651g/yd | Colourfastness | UV 5/8 Blue Scale |
| Collection | Perspective | Horizontal Repeat | 1.5cm / 0.6" | Fire Retardancy | Nfpa 260 - Class 1 |
| Country of Origin | Italy | Vertical Repeat | 1cm / 0.4" | Flammability | – |

Care Instructions

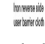
 Do not bleach

 Do not tumble dry


 Do not wash

 Drycleaning Gentle cycle

 Low iron max 110C

 Warning: Iron reverse side use barrier cloth

Usage

 Upholstery Heavy Duty

 Accessory

Attributes

 Multi Directional

Notes

Reinforce Upholstery Seam

Uph Samp Shown Railroaded

Effect is also available in Cedar, Cinder, Jade, Lichen, Mercury, Putty, Smoke.

Generated Sun, 24 Mar 2019 03:31:00 +1300.