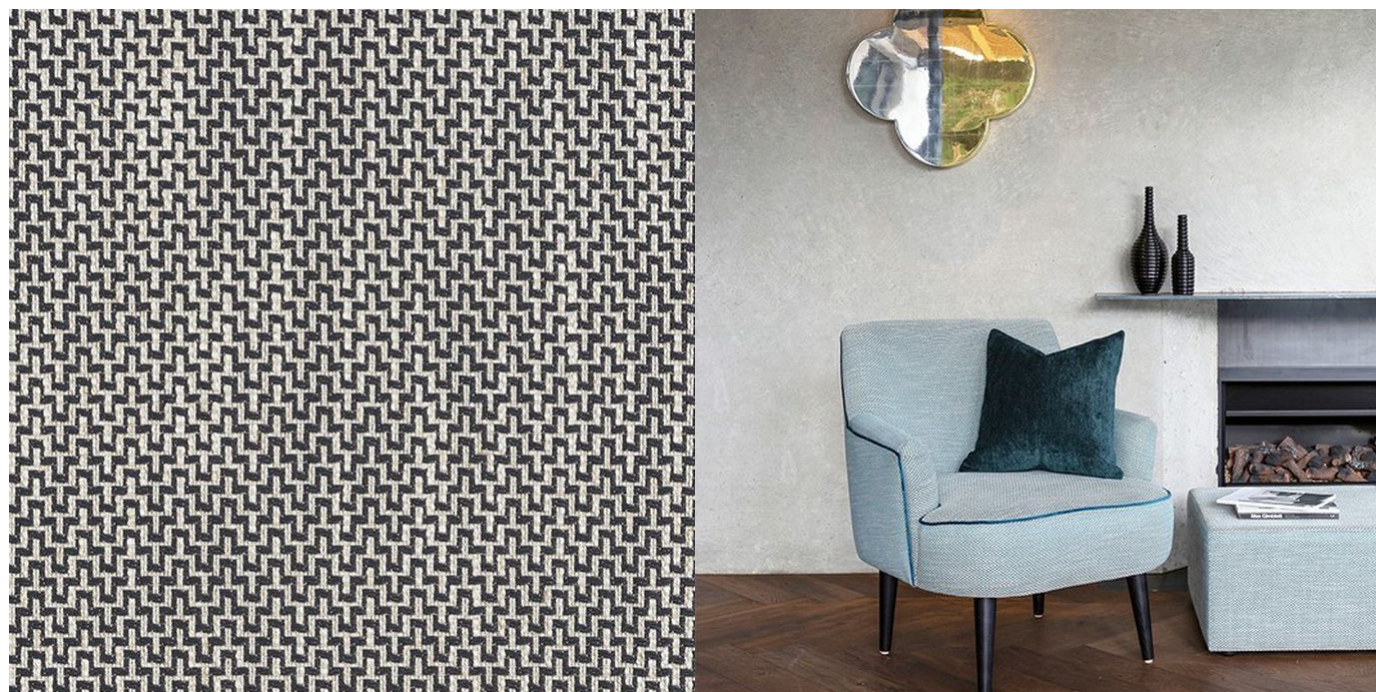


JAMES DUNLOP TEXTILES


Effect 12957-103


James Dunlop





Colour	Mercury	Composition	37% PP, 31% VI, 27% CO, 5% LI	Martindale	40,000 Martindale Cycles
Status	Active	Width	138cm / 54.3"	Wyzenbeek	45,000 Wyzenbeek Double Rubs
Brand	James Dunlop	Weight	712.1g/m / 651g/yd	Colourfastness	UV 5/8 Blue Scale
Collection	Perspective	Horizontal Repeat	1.5cm / 0.6"	Fire Retardancy	NFPA 260 - Class 1
Country of Origin	Italy	Vertical Repeat	1cm / 0.4"	Environmental	-
Finishes	-				


Care Instructions

 Do not bleach

 Do not tumble dry

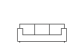
 Do not wash

 Drycleaning Gentle cycle

 Low iron max 110C

 Warning: Iron reverse side use barrier cloth


Usage

 Upholstery Heavy Duty

 Accessory

Attributes

 Multi Directional

 Fire Retardant

Notes

Reinforce Upholstery Seam

Uph Samp Shown Railroaded

Effect is also available in Cedar, Cinder, Jade, Lichen, Mineral, Putty, Smoke.

Generated Wed, 21 Oct 2020 17:37:55.