




Clarke 12748


| | | | | | |
|--------------------------|--------------|--------------------------|-----------------------|------------------------|----------------------------------|
| Status | Active | Composition | 80% WO, 9% PA, 11% PL | Martindale | 35,000 Martindale Cycles |
| Brand | James Dunlop | Width | 140cm / 55.1" | Wyzenbeek | 60,000 Wyzenbeek Double Rubs |
| Collection | Classic Wool | Weight | 441.0g/m / 403g/yd | Colourfastness | UV 5-6/8 Blue Scale |
| Country of Origin | Italy | Horizontal Repeat | 5cm / 2.0" | Fire Retardancy | AS 1530.3, NFPA 260 - Class 1 |
| Finishes | Anti Pilling | Vertical Repeat | 6.6cm / 2.6" | Environmental | - |


Care Instructions


 Do not bleach

 Do not steam


 Do not tumble dry


 Do not wash

 Drycleaning Gentle cycle

 Low iron max 110C


Usage

 Upholstery Heavy Duty

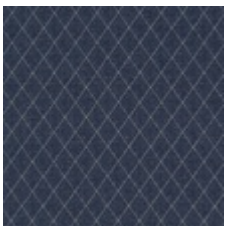
 Accessory

Attributes

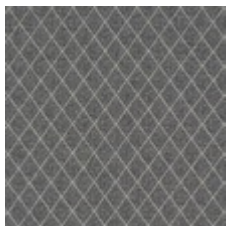
 Multi Directional

 Fire Retardant

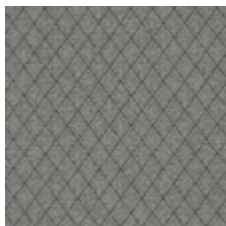
Colours



Alpine



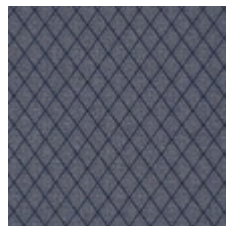
Gravel



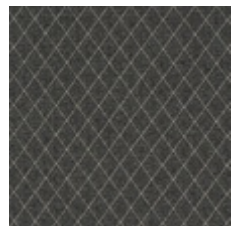
Ice



Pebble



River



Rock