







# Focus 12744

## James Dunlop

Status	Active	Composition	100% SD PC	Martindale	12,000 Martindale Cycles
Brand	<a href="#">James Dunlop</a>	Width	140cm / 55.1"	Wyzenbeek	—
Collection	Complexity	Weight	515.2g/m / 471g/yd	Colourfastness	UV 6/8 Blue Scale
Country of Origin	ITALY	Horizontal Repeat	2.5cm / 1.0"	Fire Retardancy	NFPA 260 - Class 1, CAL 117-2013
Finishes	—	Vertical Repeat	2.5cm / 1.0"	Environmental	—




### Care Instructions

 Do not tumble dry	 Drip dry in shade	 Drycleaning Gentle cycle
 Low iron max 110C	 Machine wash cool gentle cycle	 Use diluted bleach as required

### Usage

 Upholstery Light Duty	 Accessory
---	---

### Attributes

 Multi Directional Good Lightfastness	 Outdoor Use	 Reversible
---	---	--

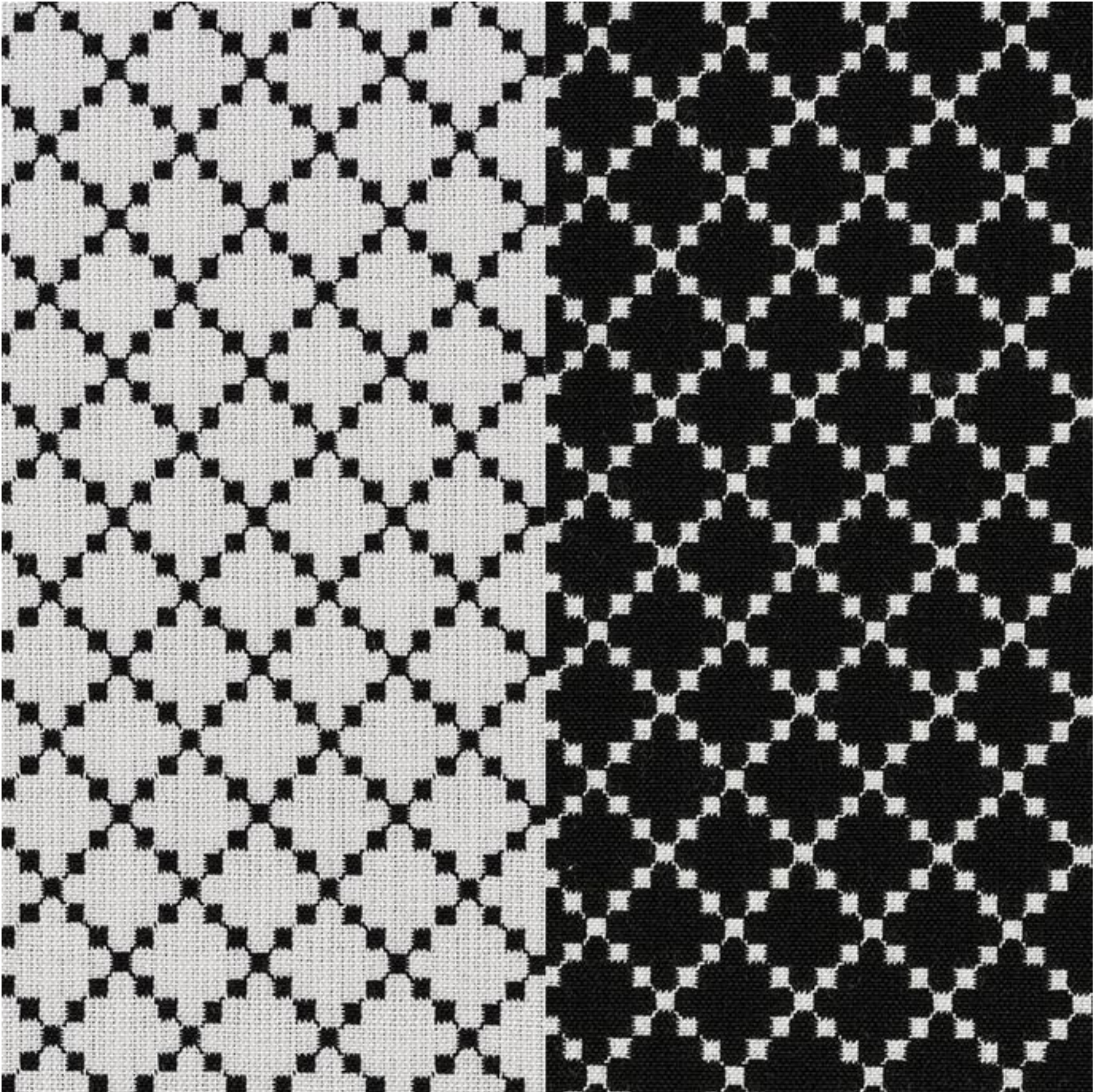
### Notes

Reinforce Upholstery Seam

Outdoor Foam If Using Outdoors

## Colours

---



Eclipse

*James Dunlop*