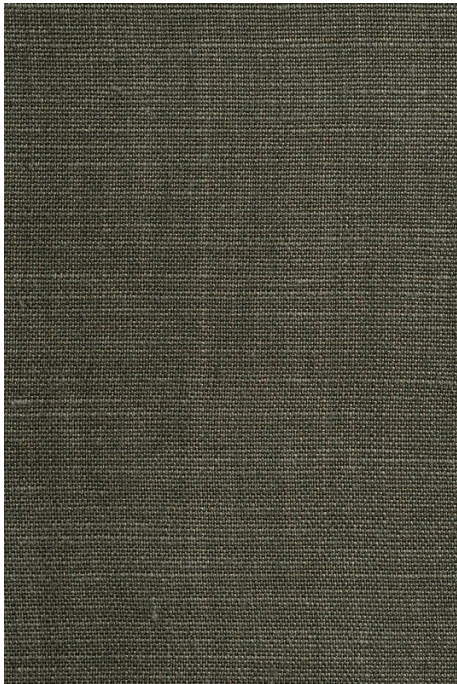








Shibui 12654-302





Colour	Moss	Composition	100% LI	Martindale	20,000 Martindale Cycles
Status	Non Repeating	Width	140cm / 55.1"	Wyzenbeek	20,000 Wyzenbeek Double Rubs
Brand	Mokum	Weight	630.0g/m / 576g/yd	Colourfastness	UV 5/8 Blue Scale
Collection	Artisan	Horizontal Repeat	None / None	Fire Retardancy	NFPA 260 - Class 1
Country of Origin	Italy	Vertical Repeat	None / None	Environmental	-
Finishes	Enzyme Wash				

Care Instructions

-  Do not bleach
 -  Do not tumble dry
 -  Drip dry in shade
 -  Drycleaning Gentle cycle
 -  Machine wash cool gentle cycle
 -  Med Iron max 150C
- Iron reverse side use barrier cloth Warning: Iron reverse side use barrier cloth

Usage

-  Upholstery Medium Duty
-  Drapery
-  Accessory

Notes

- Puddling Drape Recommended
- Reinforce Upholstery Seam

Shibui is also available in .