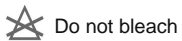


## Vienna 12575

<b>Status</b>	Active	<b>Composition</b>	100% PL	<b>Martindale</b>	70,000 Martindale Cycles
<b>Brand</b>	James Dunlop	<b>Width</b>	140cm / 55.1"	<b>Wyzenbeek</b>	100,000 Wyzenbeek Double Rubs
<b>Collection</b>	Tea House	<b>Weight</b>	697.2g/m / 637g/yd	<b>Colourfastness</b>	UV 5/8 Blue Scale
<b>Country of Origin</b>	Turkey	<b>Horizontal Repeat</b>	–	<b>Fire Retardancy</b>	AS 1530.3, NFPA 260 - Class 1, CAL 117
<b>Finishes</b>	–	<b>Vertical Repeat</b>	–	<b>Environmental</b>	–

### Care Instructions



Do not bleach



Do not tumble dry



Drip dry in shade



Drycleaning Gentle cycle



Low iron max 110C



Machine wash cool gentle cycle

### Usage



Upholstery Heavy Duty



Drapery



Accessory

### Attributes



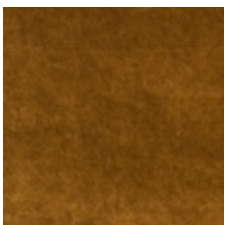
Fire Retardant

### Notes

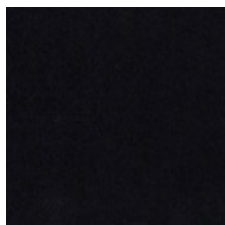
Reinforce Upholstery Seam

Commercial High Performance

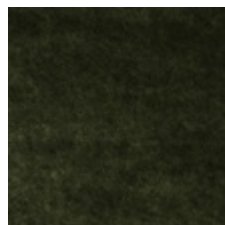
### Colours



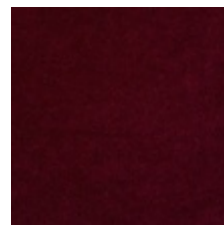
Antique



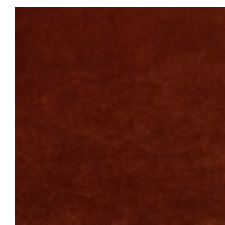
Black Tie



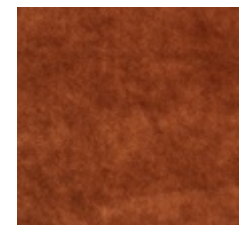
Botanical



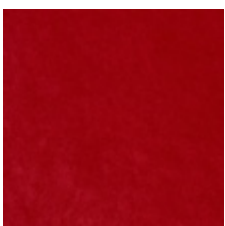
Bouquet



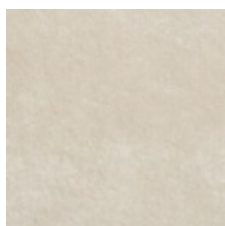
Brandy



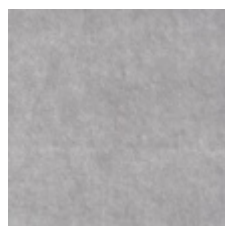
Bronzed



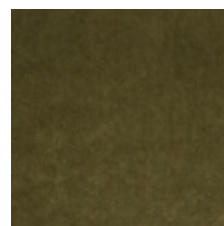
Carmen



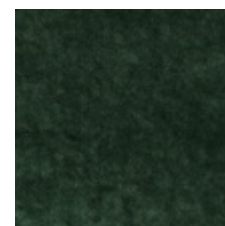
Champagne



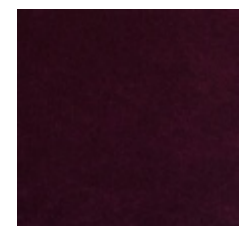
Crystal



Elm



Emerald



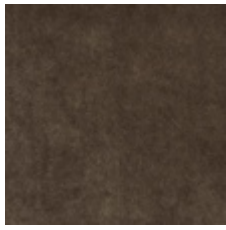
Empire



Folkstone



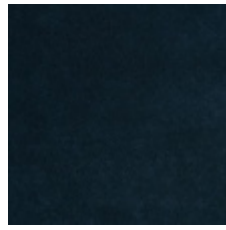
Lotus



Mink



Moonstone



Night Shadow



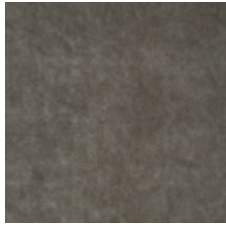
Obsidian



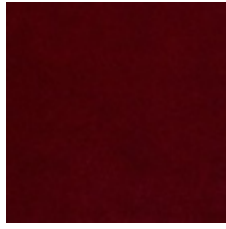
Opal



Pearl



Platinum



Scarlet



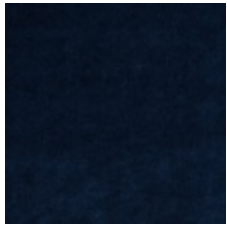
Sterling



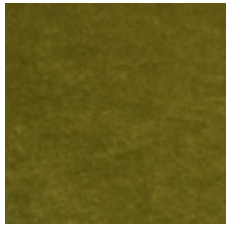
Suede



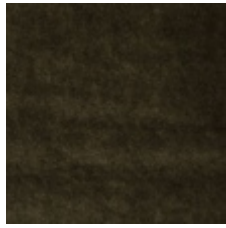
Tanzanite



Twilight



Vine



Vintage

Generated Sat, 19 Oct 2019 15:26:31 +1300.