






# Bengal Tiger 12573

## Catherine Martin by Mokum

Status	Active	Composition	59% PL, 41% VI	Martindale	38,000 Martindale Cycles
Brand	Catherine Martin by Mokum	Width	144cm / 56.7"	Wyzenbeek	100,000 Wyzenbeek Double Rubs
Collection	Majorelle	Weight	884.8g/m / 809g/yd	Colourfastness	UV 5-6/8 Blue Scale
Country of Origin	Germany	Horizontal Repeat	72cm / 28.3"	Fire Retardancy	NFPA 260 - Class 1, CAL 117-2013
Finishes	—	Vertical Repeat	61cm / 24.0"	Environmental	—

### Care Instructions

 Do not bleach	 Do not iron	 Do not tumble dry
 Do not wash	 Drycleaning Gentle cycle	

### Usage

 Upholstery Heavy Duty	 Accessory
---	---

### Notes

Shading Can Occur

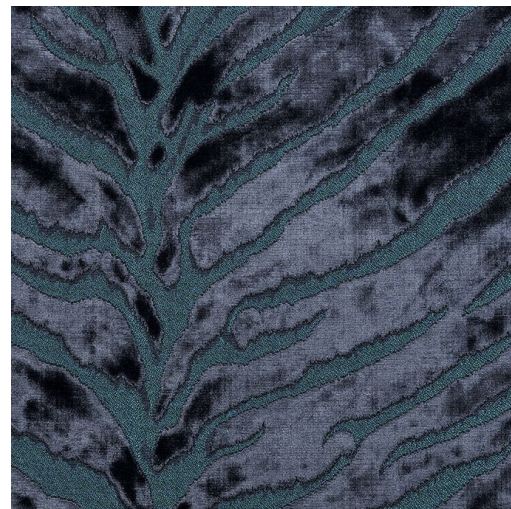
### Colours



Gold



Onyx



Sapphire



Snow

James Dunlop