

# JAMES DUNLOP TEXTILES

Strata 12516


Mokum


---


<b>Status</b>	Active	<b>Composition</b>	63% PC, 15% PL, 12% WO, 10% CO	<b>Martindale</b>	100,000 Martindale Cycles
<b>Brand</b>	Mokum	<b>Width</b>	140cm / 55.1"	<b>Wyzenbeek</b>	45,000 Wyzenbeek Double Rubs
<b>Collection</b>	Pure	<b>Weight</b>	875.0g/m / 800g/yd	<b>Colourfastness</b>	UV 6-7/8 Blue Scale
<b>Country of Origin</b>	Italy	<b>Horizontal Repeat</b>	None / None	<b>Fire Retardancy</b>	NFPA 260 - Class 1, CAL 117
<b>Finishes</b>	'—'	<b>Vertical Repeat</b>	None / None	<b>Environmental</b>	—


---


## Care Instructions

 Do not bleach

 Do not iron


 Do not tumble dry


 Do not wash

 Drycleaning Gentle cycle

---


## Usage

 Upholstery Heavy Duty

 Accessory

---

## Attributes

 Fire Retardant

---

## Notes

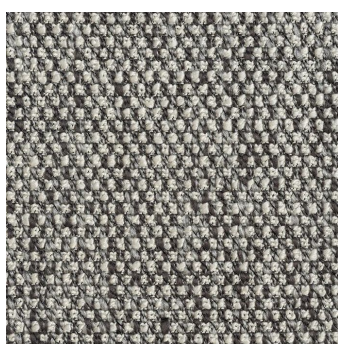
Commercial High Performance

---

## Colours



Chalk



Charcoal



Linen



Powder Blue



Silver



Whisper Pink