




**Trianon \* 12511**


<b>Status</b>	Active	<b>Composition</b>	40% CO, 31% PL, 29% PC	<b>Martindale</b>	12,000 Martindale Cycles
<b>Brand</b>	Catherine Martin by Mokum	<b>Width</b>	300cm / 118.1"	<b>Wyzenbeek</b>	–
<b>Collection</b>	Majorelle	<b>Weight</b>	233.0g/m / 213g/yd	<b>Colourfastness</b>	UV 5/8 Blue Scale
<b>Country of Origin</b>	Turkey	<b>Horizontal Repeat</b>	38cm / 15.0"	<b>Fire Retardancy</b>	–
<b>Finishes</b>	–	<b>Vertical Repeat</b>	35cm / 13.8"	<b>Environmental</b>	–


**Care Instructions**


 Do not bleach

 Do not steam


 Do not tumble dry

 Do not wash


 Drycleaning Gentle cycle

 Low iron max 110C

**Usage**

 Upholstery Light Duty

 Drapery

 Accessory

 Top of Bed

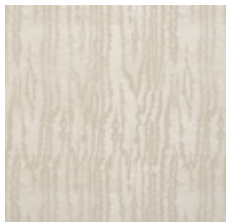
**Attributes**

Use Fabric Continuous

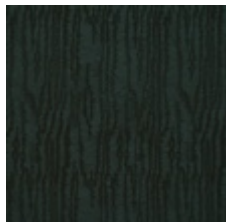
**Notes**

Reinforce Upholstery Seam

**Colours**



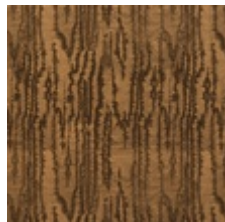
Alabaster



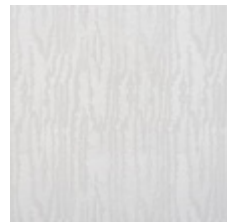
Aquamarine



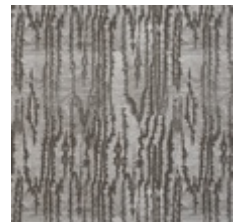
Blush



Copper



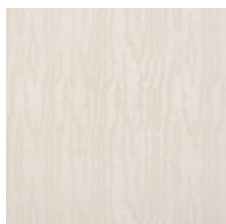
Diamond



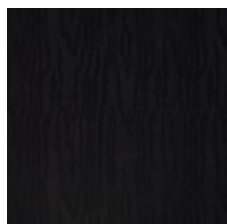
Dove



Emerald



Macaroon



Marcasite



Midnight



Mist



Opal



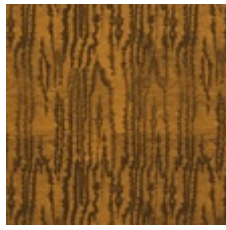
Pearl



Pewter



Snow



Topaz

Generated Tue, 17 Sep 2019 04:04:24 +1200.