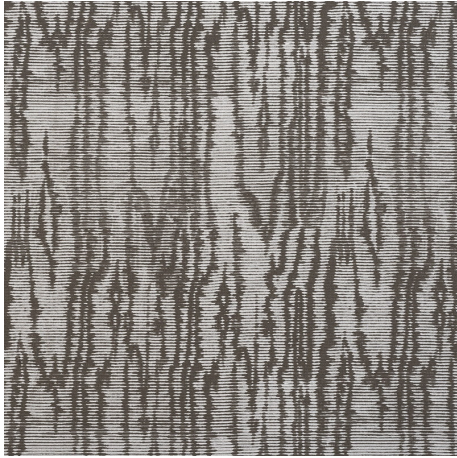




Trianon * 12511-651





Colour	Dove	Composition	40% CO, 31% PL, 29% PC	Martindale	12,000 Martindale Cycles
Status	Active	Width	300cm / 118.1"	Wyzenbeek	–
Brand	Catherine Martin by Mokum	Weight	233.0g/m / 213g/yd	Colourfastness	UV 5/8 Blue Scale
Collection	Majorelle	Horizontal Repeat	38cm / 15.0"	Fire Retardancy	–
Country of Origin	Turkey	Vertical Repeat	35cm / 13.8"	Environmental	–
Finishes	–				


Care Instructions


 Do not bleach

 Do not steam

 Do not tumble dry


 Do not wash


 Drycleaning Gentle cycle

 Low iron max 110C

Usage

 Upholstery Light Duty

 Drapery

 Accessory

 Top of Bed

Attributes

Use Fabric Continuous

Notes

Reinforce Upholstery Seam

Trianon * is also available in Alabaster, Aquamarine, Blush, Copper, Diamond, Emerald, Macaroon, Marcasite, Midnight, Mist, Opal, Pearl, Pewter, Snow, Topaz.

Generated Tue, 17 Sep 2019 04:30:11 +1200.