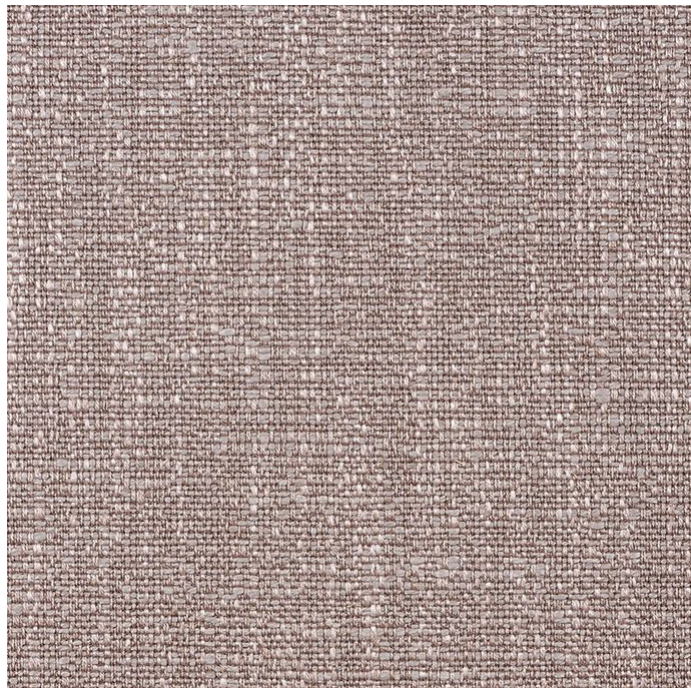








JAMES DUNLOP TEXTILES

Medina 12415-152
Catherine Martin by Mokum



Colour	Blush	Composition	59% VI, 25% LI, 7% PL, 7% CO, 2% PC	Martindale	30,000 Martindale Cycles
Status	Active	Width	140cm / 55.1"	Wyzenbeek	36,000 Wyzenbeek Double Rubs
Brand	Catherine Martin by Mokum	Weight	847.0g/m / 774g/yd	Colourfastness	UV 6-7/8 Blue Scale
Collection	Majorelle	Horizontal Repeat	None / None	Fire Retardancy	NFPA 260 - Class 1
Country of Origin	Italy	Vertical Repeat	None / None	Environmental	-
Finishes	Calandered, Stain Resistant				

Care Instructions

-  Do not bleach
-  Do not tumble dry
-  Do not wash
-  Drycleaning Gentle cycle
-  Low iron max 110C
-  Warning: Iron reverse side use barrier cloth

Usage

-  Upholstery Heavy Duty
-  Accessory

Attributes

-  Fire Retardant
-  Stain Resistant

Medina is also available in Alabaster, Copper, Lacquer, Linen, Marcasite, Midnight, Opal, Paprika, Pearl, Pewter, Powder Blue, Silver, Soapstone, Topaz, White Gold.

Generated Mon, 28 Sep 2020 16:08:31.