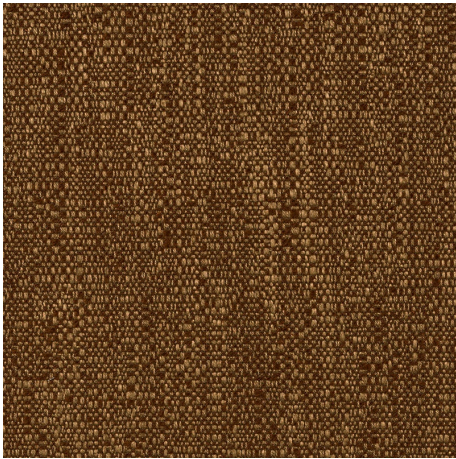




## Medina 12415-125





<b>Colour</b>	Paprika	<b>Composition</b>	59% VI, 25% LI, 7% PL, 7% CO, 2% PC	<b>Martindale</b>	30,000 Martindale Cycles
<b>Status</b>	Active	<b>Width</b>	140cm / 55.1"	<b>Wyzenbeek</b>	36,000 Wyzenbeek Double Rubs
<b>Brand</b>	Catherine Martin by Mokum	<b>Weight</b>	847.0g/m / 774g/yd	<b>Colourfastness</b>	UV 6-7/8 Blue Scale
<b>Collection</b>	Majorelle	<b>Horizontal Repeat</b>	None / None	<b>Fire Retardancy</b>	NFPA 260 - Class 1
<b>Country of Origin</b>	Italy	<b>Vertical Repeat</b>	None / None	<b>Environmental</b>	-
<b>Finishes</b>	Calandered, Stain Resistant				


### Care Instructions


 Do not bleach

 Do not tumble dry


 Do not wash

 Drycleaning Gentle cycle

 Low iron max 110C

 Warning: Iron reverse side use barrier cloth

### Usage

 Upholstery Heavy Duty

 Accessory

### Attributes

Stain Resistant

Medina is also available in Alabaster, Blush, Copper, Lacquer, Linen, Marcasite, Midnight, Opal, Pearl, Pewter, Powder Blue, Silver, Soapstone, Topaz, White Gold.