




## Bespoke 12395


<b>Status</b>	Active	<b>Composition</b>	54% VI, 34% CO, 12% PL	<b>Martindale</b>	85,000 Martindale Cycles
<b>Brand</b>	Catherine Martin by Mokum	<b>Width</b>	140cm / 55.1"	<b>Wyzenbeek</b>	80,000 Wyzenbeek Double Rubs
<b>Collection</b>	Majorelle	<b>Weight</b>	798.0g/m / 729g/yd	<b>Colourfastness</b>	UV 5/8 Blue Scale
<b>Country of Origin</b>	Italy	<b>Horizontal Repeat</b>	None / None	<b>Fire Retardancy</b>	NFPA 260 - Class 1, CAL 117
<b>Finishes</b>	-	<b>Vertical Repeat</b>	None / None	<b>Environmental</b>	-


### Care Instructions

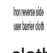
 Do not bleach

 Do not tumble dry


 Do not wash


 Drycleaning Gentle cycle


 Low iron max 110C

 Warning: Iron reverse side use barrier cloth

### Usage

 Upholstery Heavy Duty

 Drapery

 Accessory

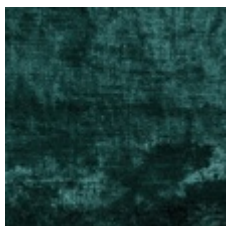
### Notes

Shading Can Occur

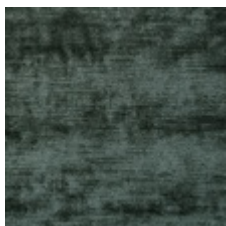
### Colours



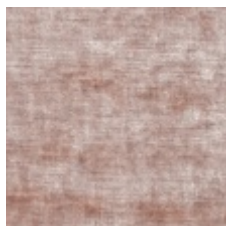
Allium



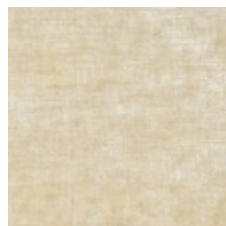
Aquamarine



Atlantic



Blush



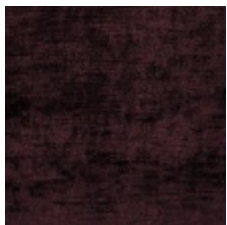
Champagne



Copper



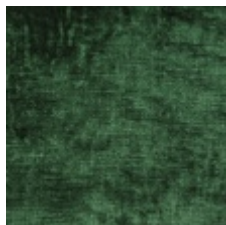
Crimson



Dahlia



Dove



Emerald



Gilt



Macaroon



Marcasite



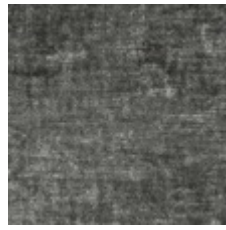
Martini



Midnight



Mink



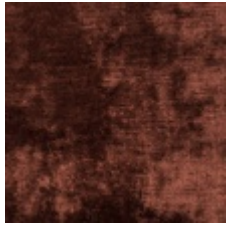
Mist



Pearl



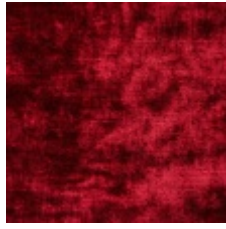
Pewter



Pimento



Powder Blue



Red Velvet



Sable



Silver



Smoke



Topaz

Generated Fri, 22 Nov 2019 08:06:04 +1300.