







# Nullabor 12369 Mokum

<b>Status</b>	Active	<b>Composition</b>	100% SD OLF	<b>Martindale</b>	47,500 Martindale Cycles
<b>Brand</b>	<u>Mokum</u>	<b>Width</b>	140cm / 55.1"	<b>Wyzenbeek</b>	90,000 Wyzenbeek Double Rubs
<b>Collection</b>	Nomadic Indoor Outdoor	<b>Weight</b>	658.0g/m / 601g/yd	<b>Colourfastness</b>	UV 6-7/8 Blue Scale
<b>Country of Origin</b>	ITALY	<b>Horizontal Repeat</b>	None / None	<b>Fire Retardancy</b>	AS 1530.3, CAL 117-2013, NFPA 260 - Class 1
<b>Finishes</b>	—	<b>Vertical Repeat</b>	None / None	<b>Environmental</b>	—

## Care Instructions

-  Do not dryclean
-  Drip dry in shade
-  Do not iron
-  Machine wash cool gentle cycle
-  Do not tumble dry
-  Use diluted bleach as required

## Usage

-  Upholstery Heavy Duty
-  Accessory

## Attributes

-  Fire Retardant
-  Outdoor Use

## Notes

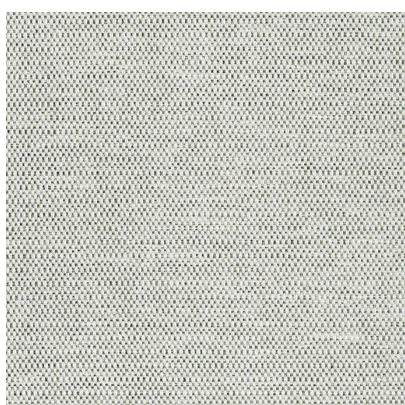
Commercial High Performance In

Outdoor Foam If Using Outdoors

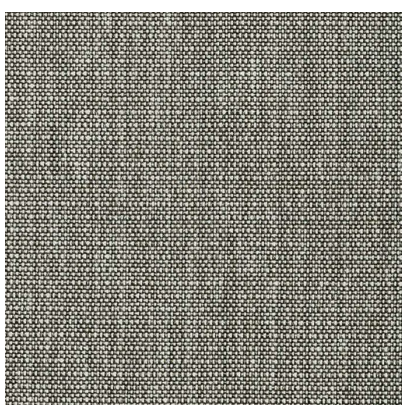
## Colours



Ash



Beechwood



Birch



Dolphin



Jute

James Dunlop