







Luna * 12228

Status	Active	Composition	48% LI, 22% WO, 15% PL, 15% STL	Martindale	-
Brand	Mokum	Width	290cm / 114.2"	Wyzenbeek	-
Collection	Interstellar	Weight	563.0g/m / 514g/yd	Colourfastness	UV 4-5/8 Blue Scale
Country of Origin	Turkey	Horizontal Repeat	None / None	Fire Retardancy	-
Finishes	Airo	Vertical Repeat	None / None	Environmental	-

Care Instructions

-  Do not bleach
-  Do not tumble dry
-  Drip dry in shade
-  Drycleaning Gentle cycle
-  Machine wash cool gentle cycle
-  Med Iron max 150C

Iron reverse side use barrier cloth
Warning: Iron reverse side use barrier cloth

Usage

-  Drapery

Attributes

-  Multi Directional

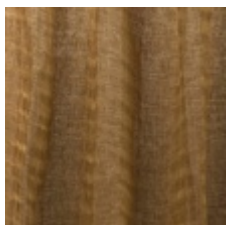
Notes

Puddling Drape Recommended

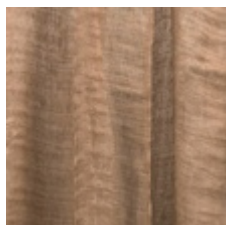
R.F.W.O.T.

Delicate - Handle With Care

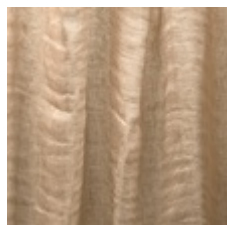
Colours



Amber



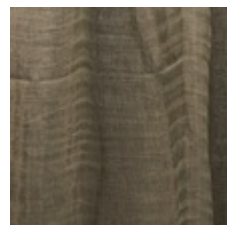
Copper



Dusk



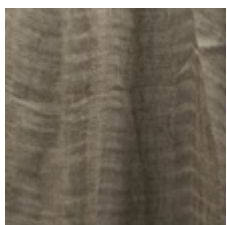
Gilt



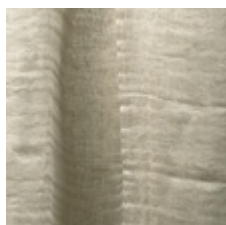
Meteor



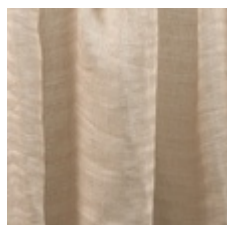
Milkyway



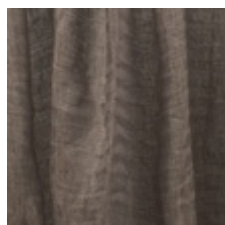
Mineral



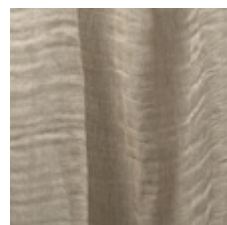
Mist



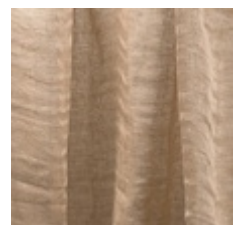
Moonbeam



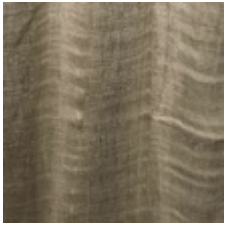
Petrol



Powder



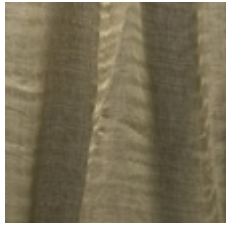
Rose Quartz



Smoke



Stardust



Verdigris

Generated Fri, 15 Nov 2019 09:01:30 +1300.