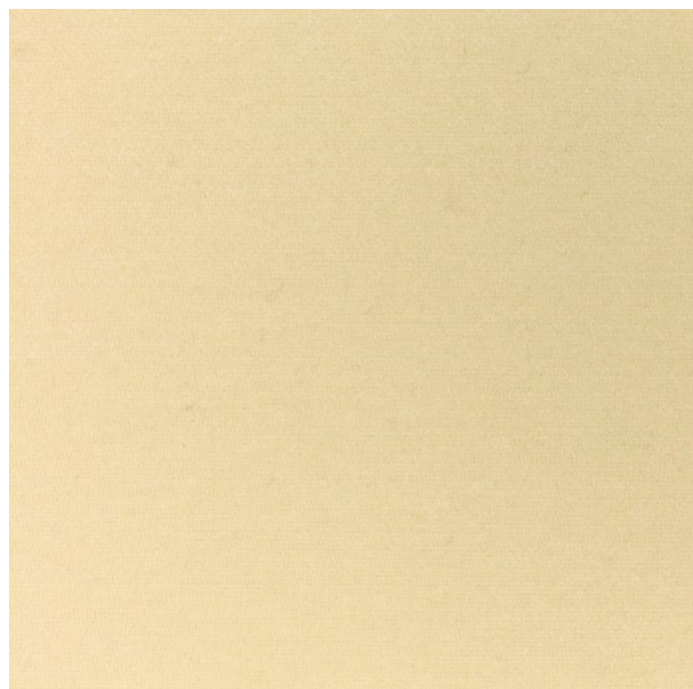


# JAMES DUNLOP TEXTILES


Nature 10917-737


James Dunlop Indent





<b>Colour</b>	Sand	<b>Composition</b>	80% WO, 20% PA	<b>Martindale</b>	70,000 Martindale Cycles
<b>Status</b>	Indent	<b>Width</b>	140cm / 55.1"	<b>Wyzenbeek</b>	20,000 Wyzenbeek Double Rubs
<b>Brand</b>	James Dunlop Indent	<b>Weight</b>	435.0g/m / 397g/yd	<b>Colourfastness</b>	UV 5/8 Blue Scale
<b>Collection</b>	-	<b>Horizontal Repeat</b>	None / None	<b>Fire Retardancy</b>	BS 5852, NFPA 260 - Class 1
<b>Country of Origin</b>	Netherlands	<b>Vertical Repeat</b>	None / None	<b>Environmental</b>	-
<b>Finishes</b>	-				


## Care Instructions

 Do not bleach

 Do not iron

 Do not tumble dry

 Do not wash

 Drycleaning Gentle cycle

## Usage

 Upholstery Heavy Duty

 Accessory

## Attributes

 Fire Retardant

Nature is also available in Adobe/127, Alice/202, Aluminium, Amphora, Andorra/184, Ashley Blue/210, Beech/765, Berry Conserve, Biking Red/183, Biscuit, Brush, Burl, Butternut, Carafe, Celadon/311, Chilli Pepper/1, Cinder, Cranberry, Curry/475, Dark Earth, Driftwood, Ebony, Facade, Frost Gray/610, Ginger, Granite/626, Grape Leaf, Green Moss, Hickory, Insignia Blue/2, Intense, Ivory/736, Laurel Wreath, Lilas, Lime/324, Linden/310, Loden, Magenta Purple, Mango, Military, Mink, Monks Robe, Moon Mist/207, Moss, Night Shade, Oatmeal, Passion, Pewter, Pink Lemonade, Pirate Black, Plum, Purple Magic, Quick Silver, Root Beer, Sapphire/275, Sherwood, Smoke Green, Stage Coach, Stone, Turquoise/303, Walnut, Wheat.

Generated Tue, 20 Oct 2020 19:24:11.