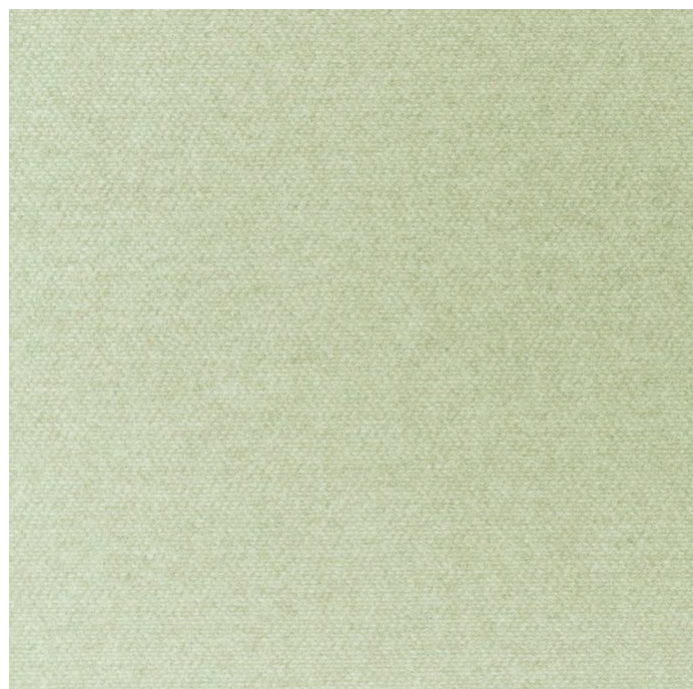


JAMES DUNLOP TEXTILES


Nature 10917-202


James Dunlop Indent





Colour	Alice/202	Composition	80% WO, 20% PA	Martindale	70,000 Martindale Cycles
Status	Indent	Width	140cm / 55.1"	Wyzenbeek	20,000 Wyzenbeek Double Rubs
Brand	James Dunlop Indent	Weight	435.0g/m / 397g/yd	Colourfastness	UV 5/8 Blue Scale
Collection	-	Horizontal Repeat	None / None	Fire Retardancy	BS 5852, NFPA 260 - Class 1
Country of Origin	Netherlands	Vertical Repeat	None / None	Environmental	-
Finishes	-				


Care Instructions

 Do not bleach

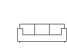
 Do not iron

 Do not tumble dry

 Do not wash


 Drycleaning Gentle cycle

Usage

 Upholstery Heavy Duty

 Accessory

Attributes

 Fire Retardant

Nature is also available in Adobe/127, Aluminium, Amphora, Andorra/184, Ashley Blue/210, Beech/765, Berry Conserve, Biking Red/183, Biscuit, Brush, Burl, Butternut, Carafe, Celadon/311, Chilli Pepper/1, Cinder, Cranberry, Curry/475, Dark Earth, Driftwood, Ebony, Facade, Frost Gray/610, Ginger, Granite/626, Grape Leaf, Green Moss, Hickory, Insignia Blue/2, Intense, Ivory/736, Laurel Wreath, Lilas, Lime/324, Linden/310, Loden, Magenta Purple, Mango, Military, Mink, Monks Robe, Moon Mist/207, Moss, Night Shade, Oatmeal, Passion, Pewter, Pink Lemonade, Pirate Black, Plum, Purple Magic, Quick Silver, Root Beer, Sand, Sapphire/275, Sherwood, Smoke Green, Stage Coach, Stone, Turquoise/303, Walnut, Wheat.

Generated Tue, 20 Oct 2020 19:28:26.