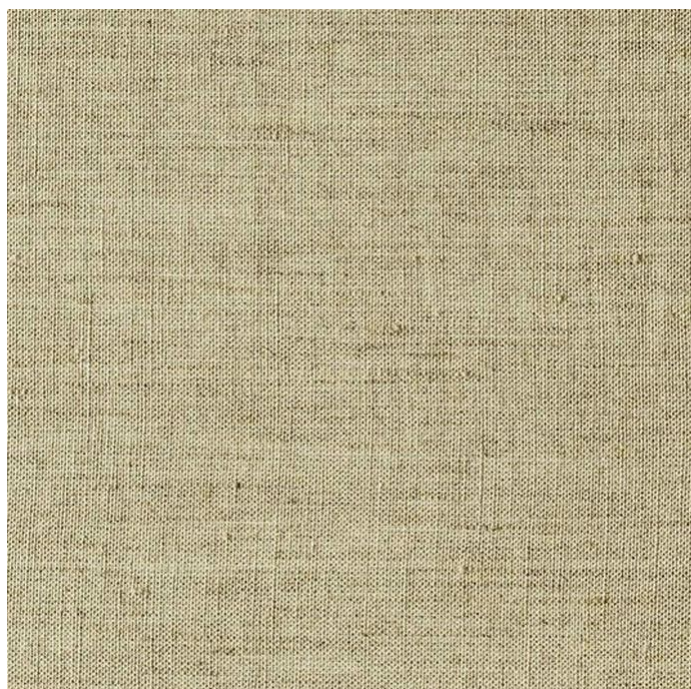


# JAMES DUNLOP TEXTILES


Kyoto 10556-110


James Dunlop





<b>Colour</b>	Hemp	<b>Composition</b>	100% LI	<b>Martindale</b>	-
<b>Status</b>	Active	<b>Width</b>	290cm / 114.2"	<b>Wyzenbeek</b>	-
<b>Brand</b>	James Dunlop	<b>Weight</b>	534.2g/m / 488g/yd	<b>Colourfastness</b>	UV 5/8 Blue Scale
<b>Collection</b>	Kimono	<b>Horizontal Repeat</b>	None / None	<b>Fire Retardancy</b>	-
<b>Country of Origin</b>	Turkey	<b>Vertical Repeat</b>	None / None	<b>Environmental</b>	-
<b>Finishes</b>	Airo				


## Care Instructions


 Do not bleach

 Do not tumble dry

 Drip dry in shade


 Drycleaning Gentle cycle

 Machine wash cool gentle cycle

 Med Iron max 150C

 Warning: Iron reverse side use barrier cloth

## Usage

 Curtains

## Attributes

 Multi Directional

## Notes

R.H.W.O.T.

Puddling Drape Recommended

Irregular Slubs Are Inherent

Kyoto is also available in Ash, Chalk, Ginger, Grain, Harvest, Indigo, Linen, Mist, Pebble, Pumice, Ricepaper, Shadow, Snow, Vine, Willow.

Generated Sat, 26 Sep 2020 00:56:24.