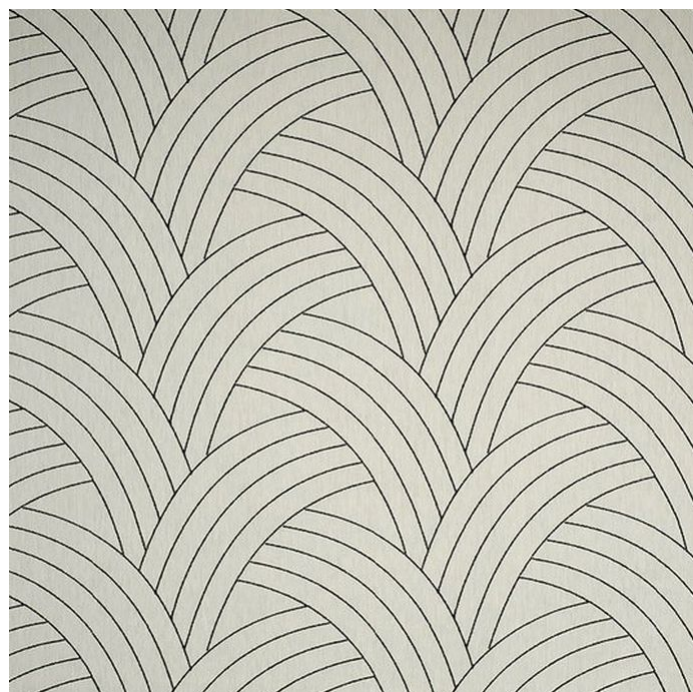


JAMES DUNLOP TEXTILES


Kimono * 10555-612


James Dunlop





Colour	Ebony	Composition	67% CO, 33% PL	Martindale	-
Status	Active	Width	295cm / 116.1"	Wyzenbeek	-
Brand	James Dunlop	Weight	452.5g/m / 413g/yd	Colourfastness	UV 4-5/8 Blue Scale
Collection	Kimono	Horizontal Repeat	38.5cm / 15.2"	Fire Retardancy	-
Country of Origin	Turkey	Vertical Repeat	55cm / 21.7"	Environmental	-
Finishes	N/A				


Care Instructions


 Do not bleach

 Do not tumble dry

 Drip dry in shade


 Drycleaning Gentle cycle

 Machine wash cool gentle cycle

 Med Iron max 150C

 Warning: Iron reverse side use barrier cloth

Usage

 Curtains

Attributes

 Multi Directional

 Reversible

Notes

Puddling Drape Recommended

R.F.W.O.T.

Kimono * is also available in Ricepaper, Willow.

Generated Wed, 30 Sep 2020 18:01:54.