

# JAMES DUNLOP TEXTILES







Sampan 10188  
Mokum

---

<b>Status</b>	End of Line	<b>Composition</b>	38% VI, 34% CO, 16% LI, 12% PL	<b>Martindale</b>	25,000 Martindale Cycles
<b>Brand</b>	Mokum	<b>Width</b>	140cm / 55.1"	<b>Wyzenbeek</b>	—
<b>Collection</b>	Tribal	<b>Weight</b>	833.0g/m / 761g/yd	<b>Colourfastness</b>	UV 6/8 Blue Scale
<b>Country of Origin</b>	Italy	<b>Horizontal Repeat</b>	None / None	<b>Fire Retardancy</b>	NFPA 260 - Class 1
<b>Finishes</b>	Stain Resistant	<b>Vertical Repeat</b>	None / None	<b>Environmental</b>	—

---

## Care Instructions

-  Do not bleach
  -  Do not tumble dry
  -  Do not wash
  -  Drycleaning Gentle cycle
  -  Low iron max 110C
  -  Warning: Iron reverse side use barrier cloth
- 

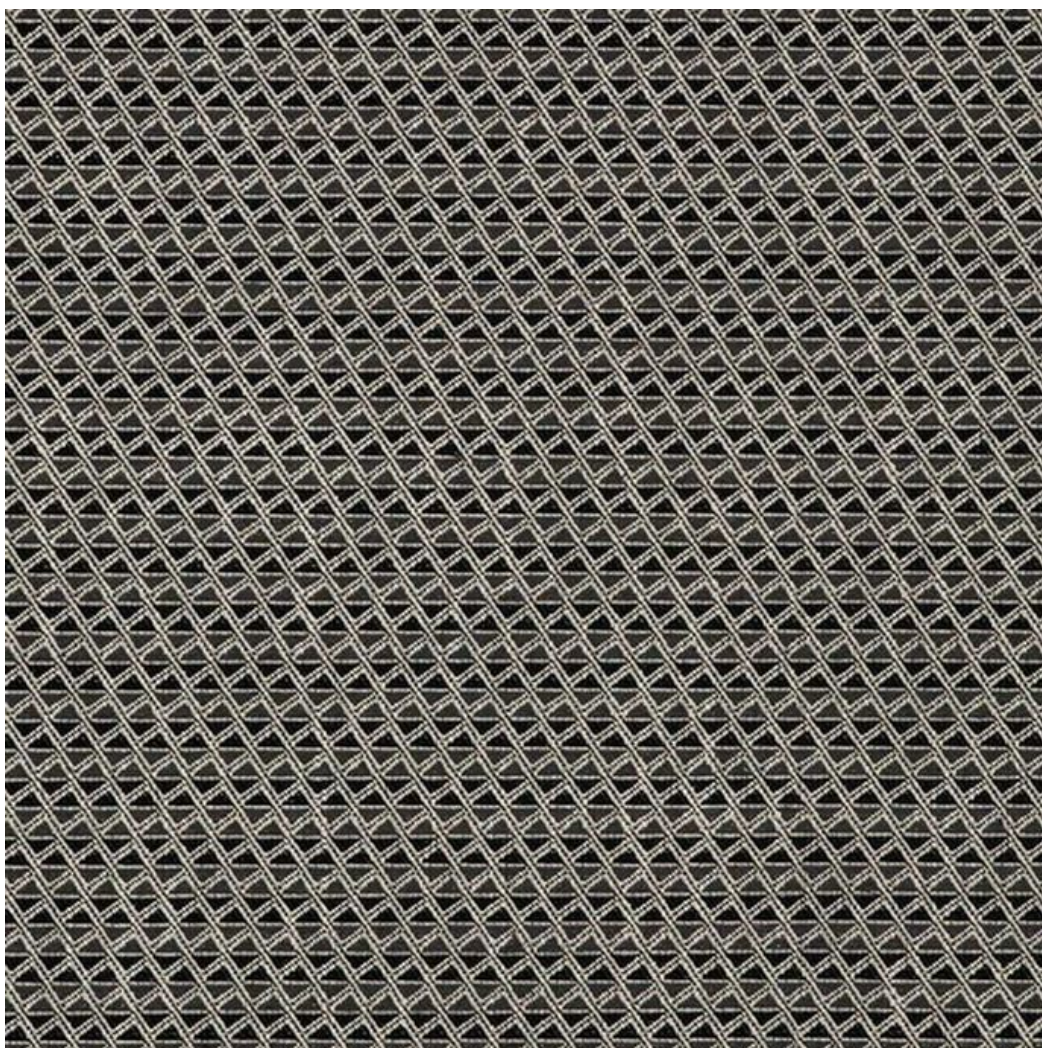
## Usage

-  Upholstery Heavy Duty
  -  Accessory
- 

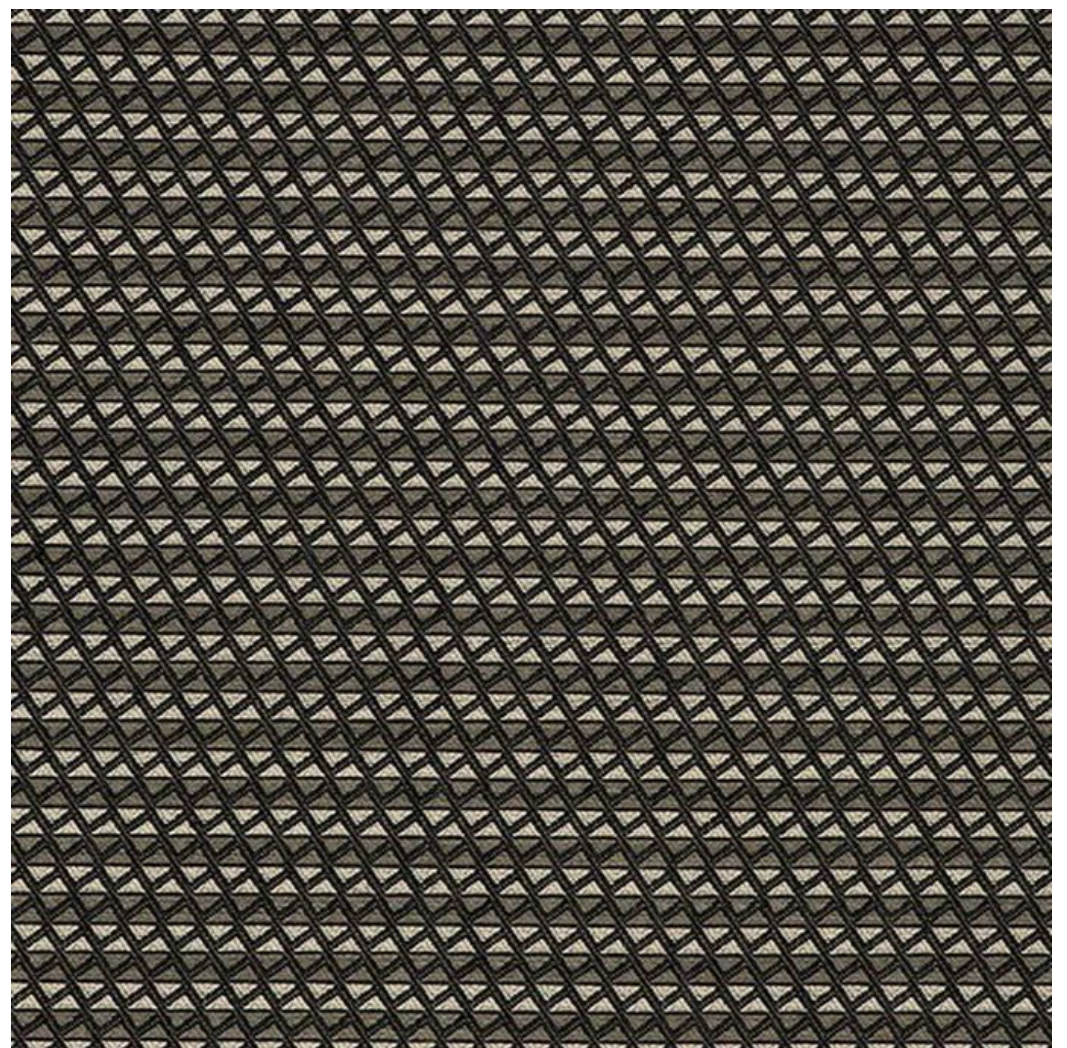
## Attributes

-  Fire Retardant
  - Stain Resistant
- 

## Colours



Basalt



Clay