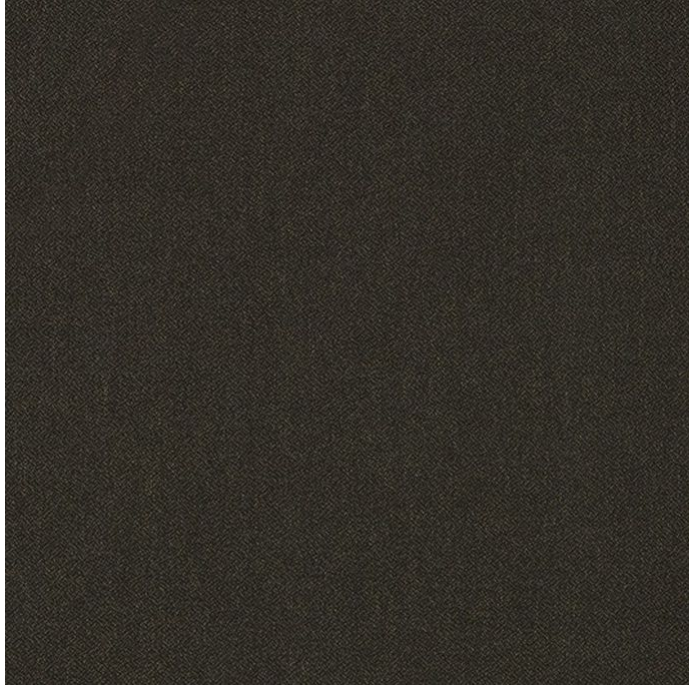


# JAMES DUNLOP TEXTILES







Kuma 10131-106

James Dunlop



<b>Colour</b>	Cafe	<b>Composition</b>	100% PL	<b>Martindale</b>	48,000 Martindale Cycles
<b>Status</b>	End of Line	<b>Width</b>	137cm / 53.9"	<b>Wyzenbeek</b>	250,000 Wyzenbeek Double Rubs
<b>Brand</b>	James Dunlop	<b>Weight</b>	415.0g/m / 379g/yd	<b>Colourfastness</b>	UV 5/8 Blue Scale
<b>Collection</b>	Crypton One	<b>Horizontal Repeat</b>	None / None	<b>Fire Retardancy</b>	NFPA 260 - Class 1, AS 1530.3
<b>Country of Origin</b>	Turkey	<b>Vertical Repeat</b>	None / None	<b>Environmental</b>	-
<b>Finishes</b>	-				

## Care Instructions

-  Do not bleach
-  Do not dryclean
-  Do not iron
-  Do not tumble dry
-  Do not wash
-  Warning: Sponge gently with warm water and non-alkaline soap

## Usage

-  Upholstery Heavy Duty
-  Accessory

## Attributes

-  Fire Retardant
-  Crypton

## Notes

Commercial High Performance In

Kuma is also available in Charcoal, Grain, Granite, Java, Sandstone, Tamarillo, Tussock, Wheat.

Generated Thu, 01 Oct 2020 22:36:32.